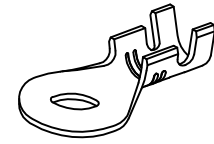
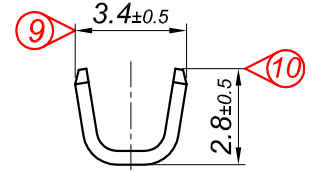
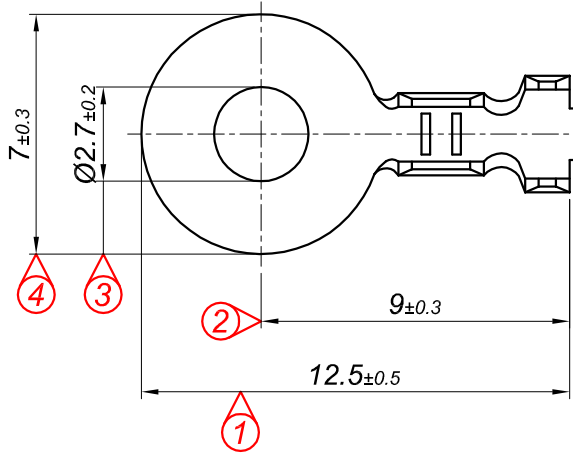
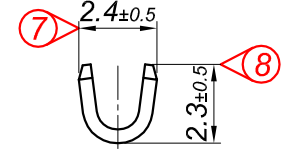
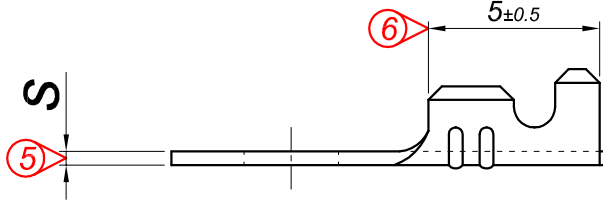
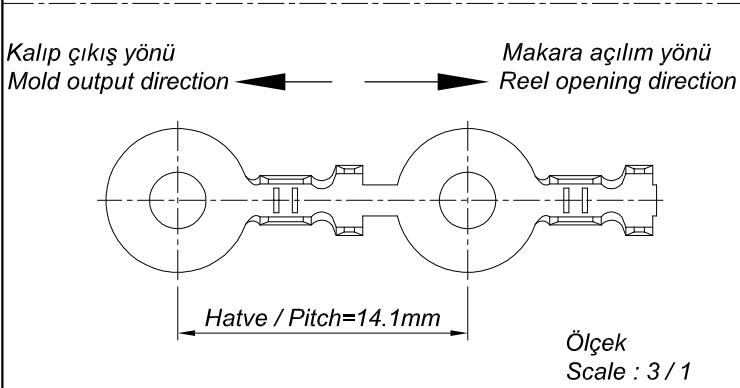


PARÇA KODU PART CODE	PARÇA ADI PART NAME	s ÖLÇÜSÜ (KALINLIK) s MEASURE (THICKNESS)	Malzeme Material	Kaplama Coating
TŞ 2471.40 DP	1 NO KABLO UÇ K.A. Ø2.7 =DP=	0.40±0.05	(CuZn30) Pirinç / Brass	_____
TŞ 2471.40 RP	1 NO KABLO UÇ K.A. Ø2.7 =RP=	0.40±0.05	(CuZn30) Pirinç / Brass	_____
TŞ 2471.40 RPK	1 NO KABLO UÇ K.A. Ø2.7 =RPK=	0.40±0.05	(CuZn30) Pirinç / Brass	Kalay / Sn (3-5µ)
TŞ 2471.50 DP	1 NO KABLO UÇ K.A. Ø2.7 =DP=	0.50±0.05	(CuZn30) Pirinç / Brass	_____
TŞ 2471.50 RP	1 NO KABLO UÇ K.A. Ø2.7 =RP=	0.50±0.05	(CuZn30) Pirinç / Brass	_____
TŞ 2471.50 RPK	1 NO KABLO UÇ K.A. Ø2.7 =RPK=	0.50±0.05	(CuZn30) Pirinç / Brass	Kalay / Sn (3-5µ)
TŞ 2471.50 RÇN	1 NO KABLO UÇ K.A. Ø2.7 =RÇN=	0.50±0.05	Nikel kaplı çelik / Nickel plated Steel	Nikel / Ni (>1.5µ)




Perspektif  
Perspective



### Kablo Kesiti

Wire Section : 0.25 - 0.50 mm<sup>2</sup>

Resim üzerinden ölçü almayınız  
do not measure on drawing

Tarih / Date	18.12.2014	İmza /Signature	Ölçek /Scale		
Çizen / Desing	M.Yağcı				
Onay / Approval	S.Gölcük		5 / 1	No	Değişiklik / Revision
					Tarih/Date
	Parça Adı: Part Name	1 NO KABLO UÇ KÜÇÜK AYAK Ø2.7		Parça Kodu: Part Code	TŞ 2471